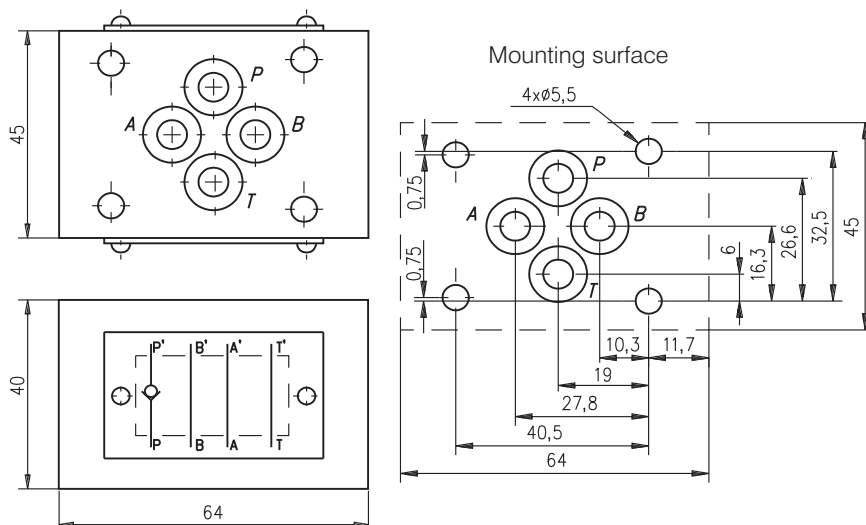
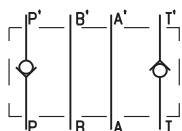
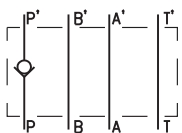


DESCRIPTION

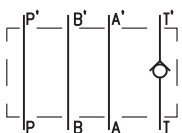
- ✓ Check valves for modular mounting-KO6M/32...
- ✓ Check valves give leak free closure in one direction and allow free passing in the other.
- ✓ Mounting surface CETOP3 ; NG6

DIMENSIONS

SYMBOL


KO6M/32PT



KO6M/32P



KO6M/32T

ORDERING CODE

KO	6	M	/	32	***
----	---	---	---	----	-----

Check valve

Nominal bore 6mm.

Modular mounting

Rated pressure: up to 320 bar.-32

 Function

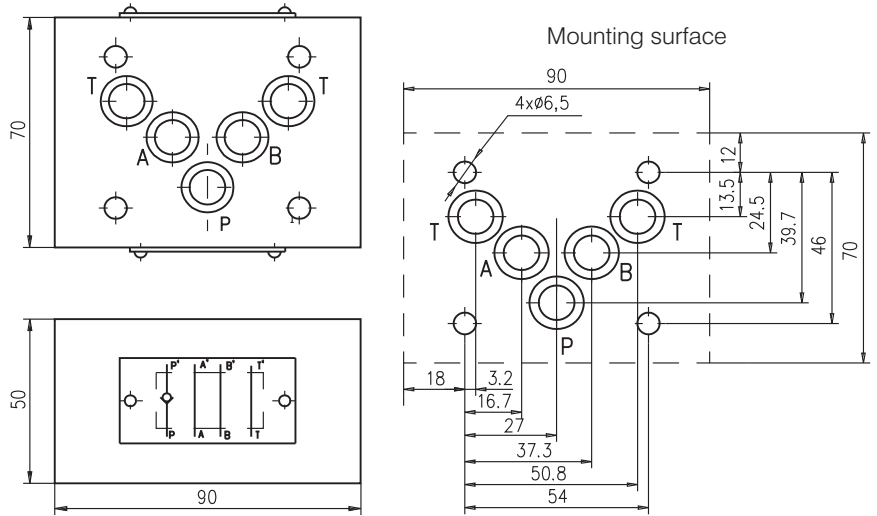
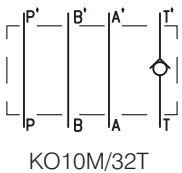
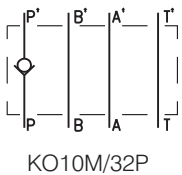
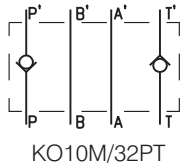
- at line P to P' - P
- at line T' to T - T
- at line P to P' & T' to T - PT

TECHNICAL DATA

Weight	0,800 kg
Max. Pressure	320 bar
Rated flow ($\Delta p=5$ bar.)	20 l/min
Cracking pressure	0,5 bar
Working liquid-hydraulic oils with characteristics:	
-viscosity	10...400 cSt
-degree of filtration	0,025 mm
-temperature	-20...+80°C

DESCRIPTION

- ✓ Check valves for modular mounting-KO10M/32...
- ✓ Check valves give leak free closure in one direction and allow free passing in the other.
- ✓ Mounting surface CETOP5 ; NG10

DIMENSIONS

SYMBOL

ORDERING CODE

KO	10	M	/	32	***
----	----	---	---	----	-----

Check valve

Nominal bore 10mm.

Modular mounting

Rated pressure: up to 320 bar.-32

Function

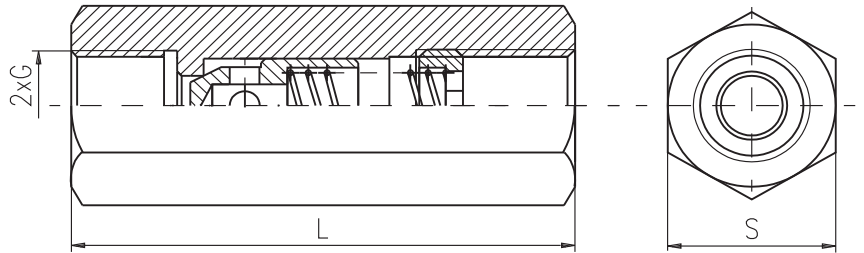
- at line P to P' - P
- at line T' to T - T
- at line P to P' & T' to T - PT

TECHNICAL DATA

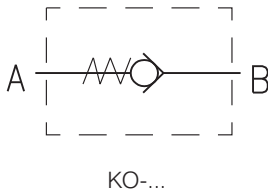
Weight	2,300 kg
Max. Pressure	320 bar
Rated flow ($\Delta p=5$ bar.)	40 l/min
Cracking pressure	0,8 bar
Working liquid-hydraulic oils with characteristics:	
-viscosity	10...400 cSt
-degree of filtration	0,025 mm
-temperature	-20...+80°C

DESCRIPTION

- ✓ Check valves for pipe mounting-KO-...
- ✓ Check valves give leak free closure in one direction and allow free flow in the other.

DIMENSIONS


G	1/8	1/4	3/8	1/2	3/4	1
L(mm)	38	56	65	68	80	100
S(mm)	14	19	24	27	36	46

SYMBOL

ORDERING CODE

KO	-	***	-	***
----	---	-----	---	-----

Check valve

Mounting thread:

G1/8 -1/8

G1/4 -1/4

G3/8 -3/8

G1/2 -1/2

G3/4 -3/4

G1 -1

Cracking pressure - (bar.) see table below

TECHNICAL DATA

Max. Pressure		320 bar
Rated flow ($\Delta p=5$ bar.)	-1/8	10 l/min
	-1/4	20 l/min
	-3/8	40 l/min
	-1/2	60 l/min
	-3/4	90 l/min
	-1	120 l/min
	Cracking pressure	-1/8
-1/4		1 bar
-3/8		0,5 bar
-1/2		0,6 bar
-3/4		0,4 bar
-1		1,2 bar
Working liquid-hydraulic oils with characteristics:		
-viscosity		10...400 cSt
-degree of filtration		0,025 mm
-temperature		-20...+80°C